



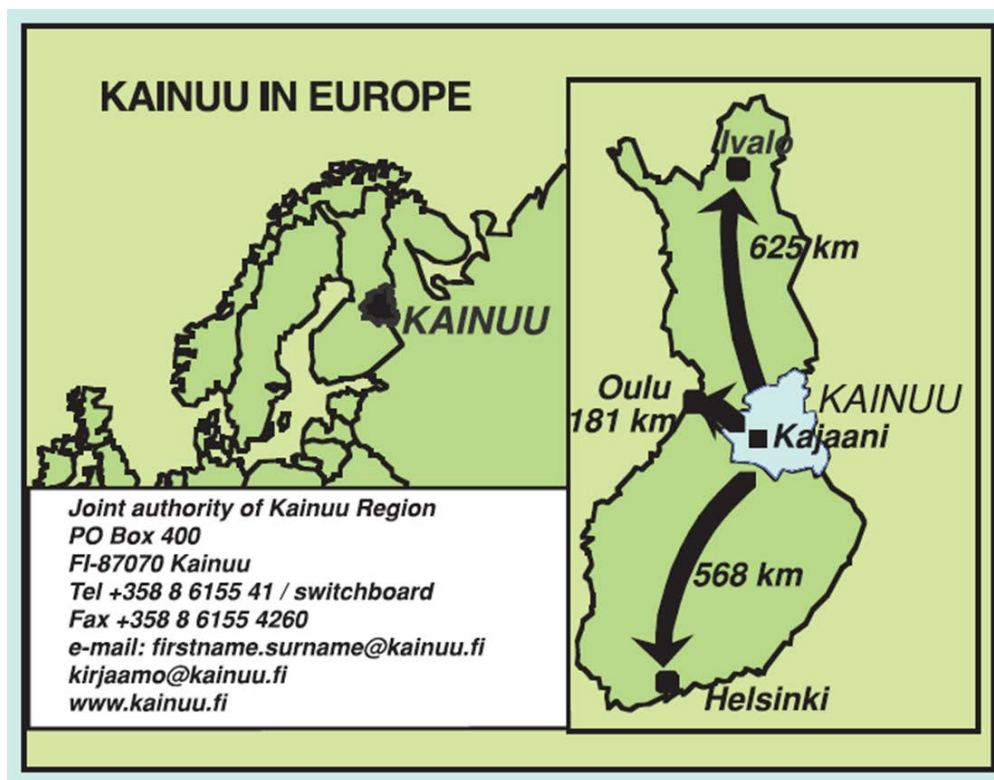
# BARENTS COOPERATION

## Transport and logistics

04.02.2014 / Hannu Heikkinen / Planning Director



# KAINUU REGION





## BARENTS REGIONAL COOPERATION AREA

Norway:  
Nordland, Troms, Finnmark

Sweden:  
Västerbotten, Norrbotten

Finland:  
Lapland, Oulu Region, Kainuu,  
(North Karelia, observer status)

Russia:  
Murmansk, Karelia,  
Arkhangelsk,  
Komi and Nenets





# BARENTS COOPERATION

- mutual cooperation on national and regional level

## NATIONAL LEVEL

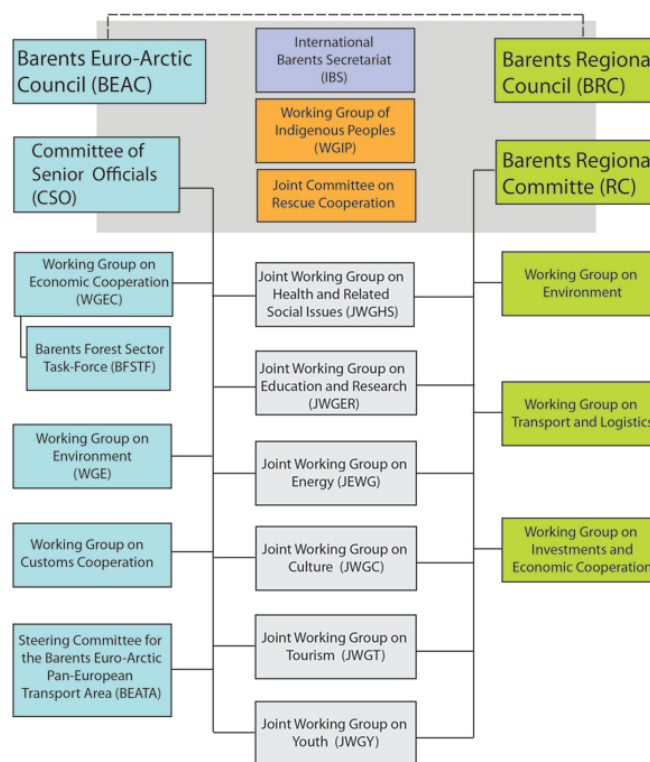
**Barents Euro Arctic Council (BEAC)**

**Committee of Senior Officials (CSO)**

Working Groups

- Some Joint working Groups with regional level

- **BEATA** Steering Committee for the Barents Euro-Arctic Pan-European Transport Area



## REGIONAL LEVEL

**Barents Regional Council (BRC)**

- Rounding chairmanship on 2 years periods: 2013 – 2015 Arkangelsk Oblast

**Barents Regional Committee (RC)**

- Working Groups
- Some Joint Working Groups with national level
- **BRWGTL** Barents Regional Working Group on Transport and Logistics







## MANDATE FOR THE BRWGTL (RC 2010)

- **Strengthen transport-planning cooperation** in the Barents Region
- **Increase the common understanding** of transport problems in the region
- Help the decision makers, planners, authorities and companies **to see the region as a single transport area**
- Support sustainable development and growth in the region by promoting to development of **well-functioning transportation infrastructure** both in North-South and East-West direction consisting of railroads, roads and air traffic
- Working out a **regional reflection on Barents Transport Strategy**. The Barents Transport strategy should seek to summarize and coordinate all the national and regional initiatives and thus serve as a guideline for development of sustainable and well-functional multimodal transport infrastructure in the region
- Seek to be **actively involved in the work** on the national level (BEATA), the European level such as TEN-T and the Northern Dimension partnership for transport and logistics



## THE BARENTS PROGRAMME 2014 – 2018 (BRC 2013)

### - some highlights for the BRWGTL

- The East – West transport connections
- Flight connections inside the Barents Region
- The Northern sea routes
- Road connections leading to and from international border crossing points
- Intelligent Transport Systems (ITS)
- To activate multilateral cooperation
- To optimize transport networks on land, air and sea
- To develop and propose an integrated Barents Region Transport Strategy



## BARENTS FREEWAY –PROJECT 1.9.2012 – 31.12.2014



illustration: Ilja Karsikas

### BARENTS FREEWAY

Project period: 1.9.2012 - 31.12.2014

Lead Partner: Lapland ELY Centre

Partners:

- Regional Council of Lapland
- Norbotten County Administration
- Nordland Fylkeskommune
- Troms Fylkeskommune
- Finnmark Fylkeskommune
- Murmansk Regional Ministry of T&C
- Murmansk Avtodor
- Transport Agency of the Arkhangelsk
- Arkhangelsk Avtodor





# Barents Freeway Project

In response to new challenges arising this project sets out to improve the economic and social development of the local communities in the Kolarctic area. The focus of these developments will be through transport infrastructure in connection to the Barents Region Transport Strategy.

## The main objectives of the Project:

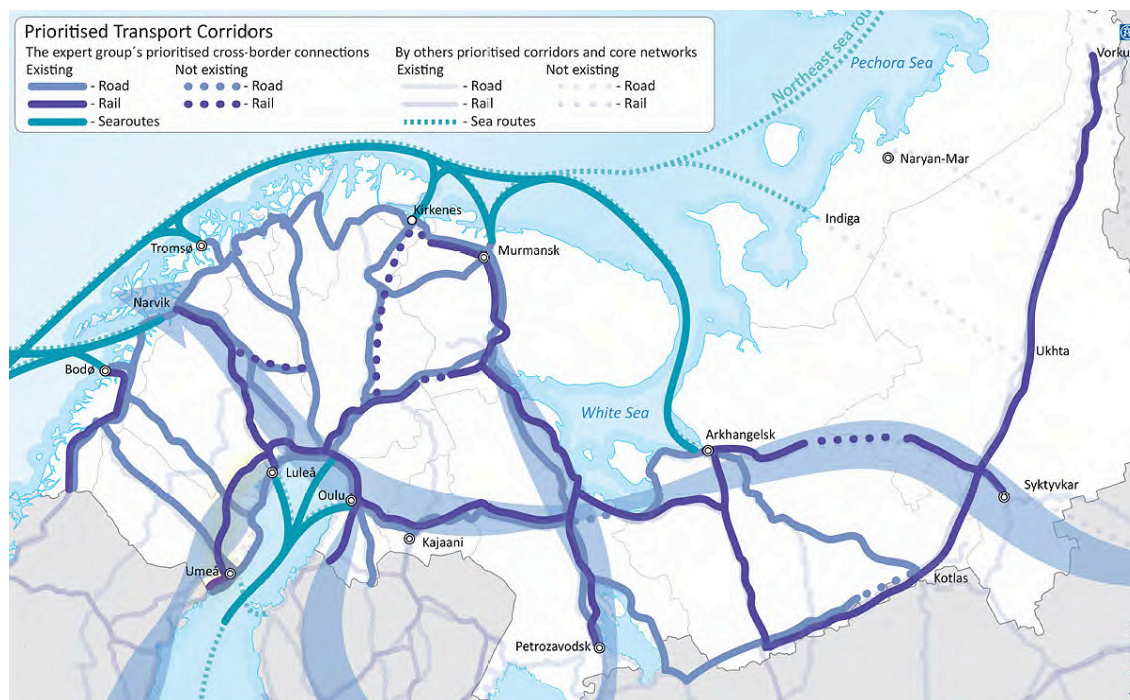
- **To integrate** the current transport strategies, plans and projects of each country into a common transport strategy.
- **To eliminate** border constraints in order to improve transport flow and accessibility of markets so that the local and global economies are further integrated.

Pöyry Finland Ltd & Ass



# Joint Barents Transport Plan /

## ”BEATA:s Expert Group’s prioritized transport network”



Next step:

### Cooperation

- BEATA: Joint Barents Transport Strategy?
- BRWGTL / Barents Freeway – project: Barents Region Transport Strategy?



## MORE INFORMATION ABOUT THE BARENTS COOPERATION

[www.barentsinfo.org](http://www.barentsinfo.org)

[www.beac.st](http://www.beac.st)

[www.barentsobserver.com](http://www.barentsobserver.com)

NDPTL: [www.ndptl.org](http://www.ndptl.org)

BRWGTL: [hannu.heikkinen@kainuu.fi](mailto:hannu.heikkinen@kainuu.fi)

Barents Freeway –hanke: [jorma.leskinen@ely-keskus.fi](mailto:jorma.leskinen@ely-keskus.fi)