

Liik
enne
vira
sto

GOFREP

18.6.2014

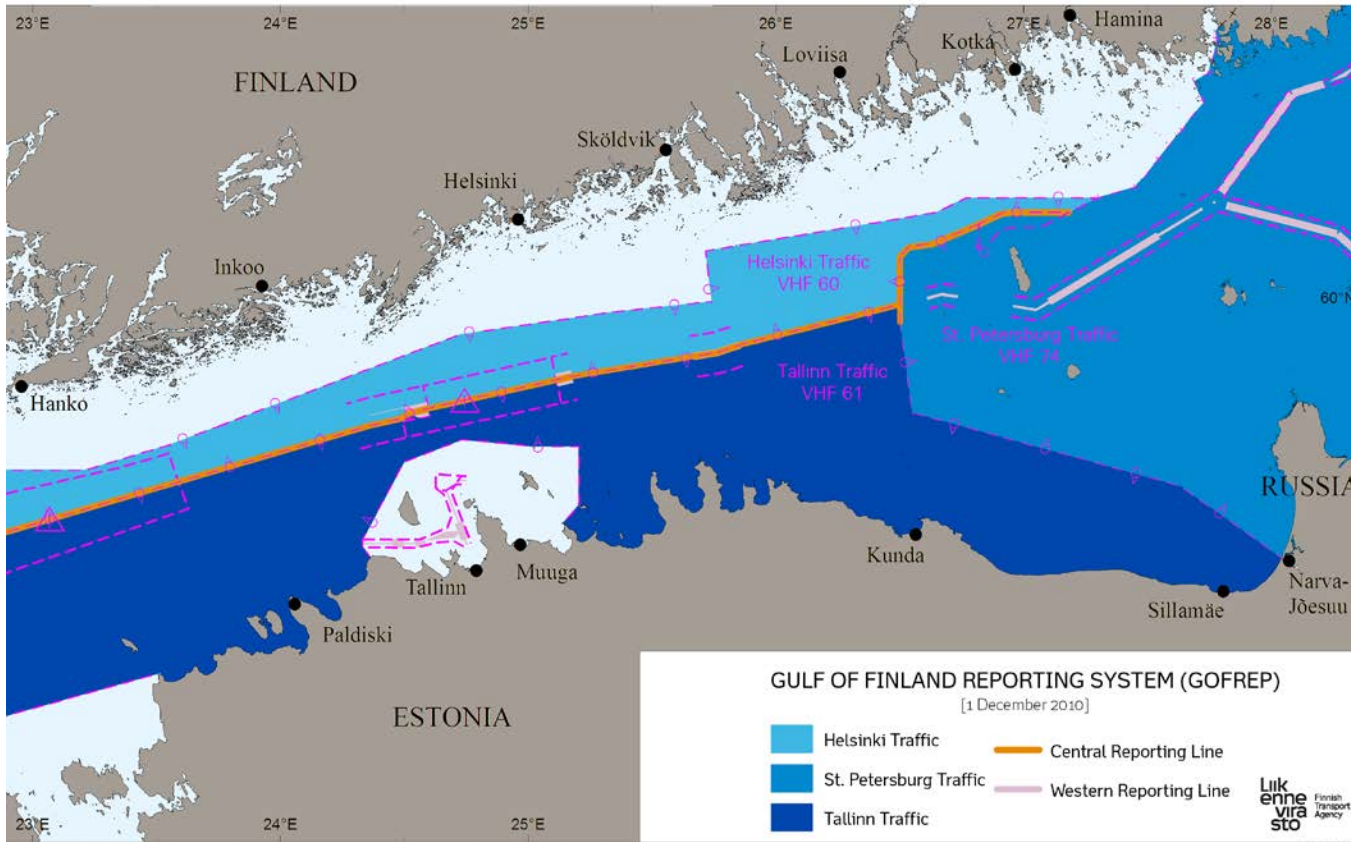
Finnish Transport Agency

- Government Agency operating under the jurisdiction of the Ministry of Transport and Communications
- Responsible for the Finnish transport infrastructure and the overall development of Finland's transport system (including road, railway and maritime traffic lanes – but not aviation).
 - procurement of maintenance, planning and surveying of merchant shipping lanes (3,900 km) and Aids to Navigation (total 25 000)
- Enables smooth, efficient and safe travel and transport in all conditions also wintertime.
 - 3 VTS centers (and supporting sensor and communication systems)
 - Icebreaking services (23 winter ports)
 - DGPS service
 - Automatic information systems
 - Reporting systems (national SW)



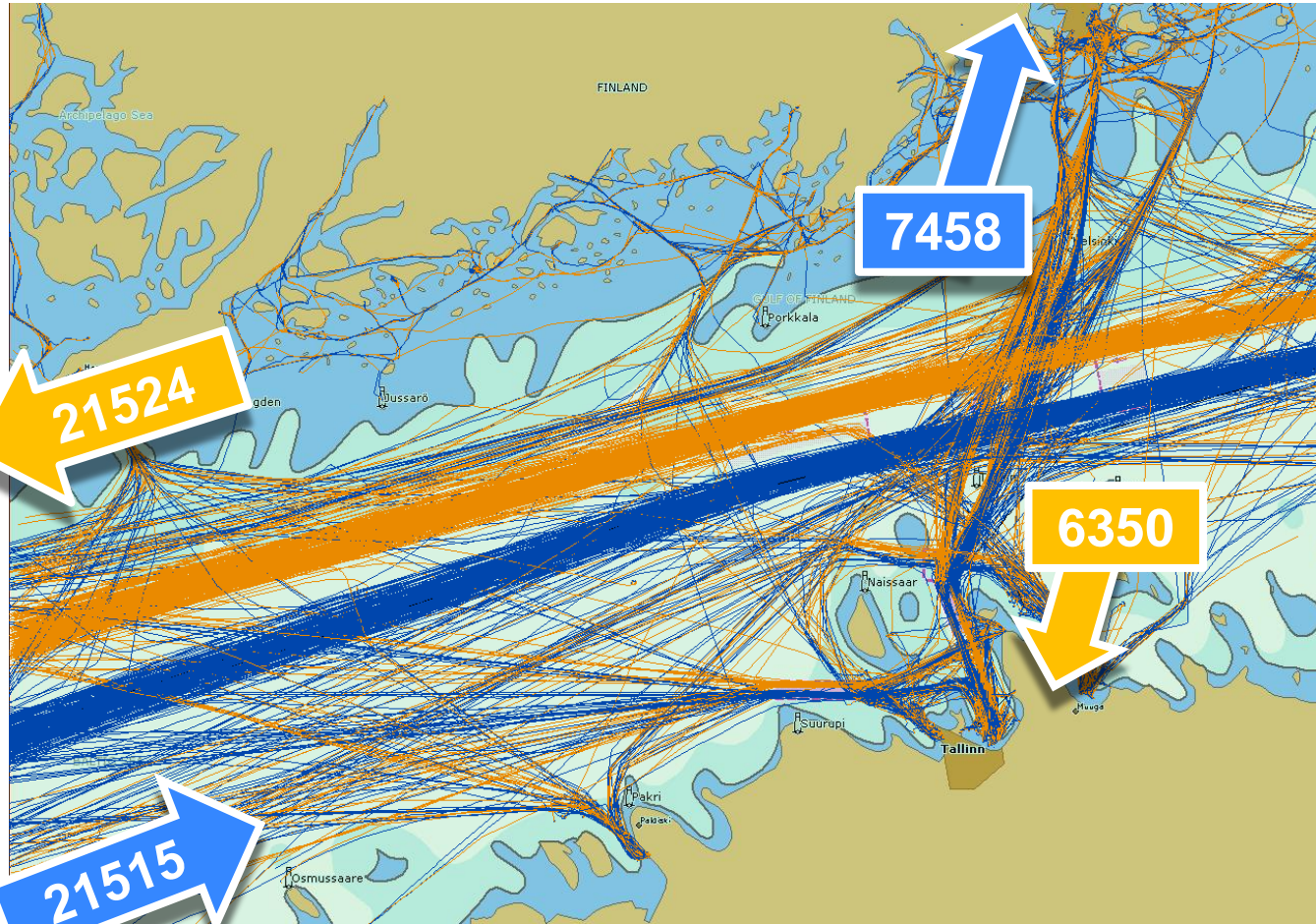
GOFREP – mandatory Ship Reporting System in the Gulf of Finland

Trilateral system operated by Estonia, Finland and Russian Federation



- Operated jointly by Finland, Estonia and Russia
- Covers the international waters in the Gulf of Finland. In addition, Estonia and Finland have implemented mandatory ship reporting systems to their national water areas outside VTS areas
- All ships over 300 gross tonnage are required to participate
- Adopted by International Maritime Organisation (IMO) in accordance with Safety Of Life At Sea (SOLAS) reg. V/11 and related resolutions

Traffic in the Gulf of Finland



Annual crossing vessel traffic in sea area between Helsinki and Tallinn

- 7 000 tankers
= average 19 per day
- 9 000 passenger ships
= average 24 per day
- 25 000 other ships
= average 68 per day

Aim of the service

The service is established to improve safety by providing and receiving information and by maintaining surveillance with a view to deterring contraventions and avoiding accidents.

Functions of GOFREP are:

To collect traffic and general information which is relevant to the safe and timely passage of vessels in the GOFREP area.

To distribute traffic and general navigational information to vessels.

To identify vessels that proceed or appear to proceed contrary to the International Regulations for Preventing Collisions at Sea (COLREGS), 1972 as amended.

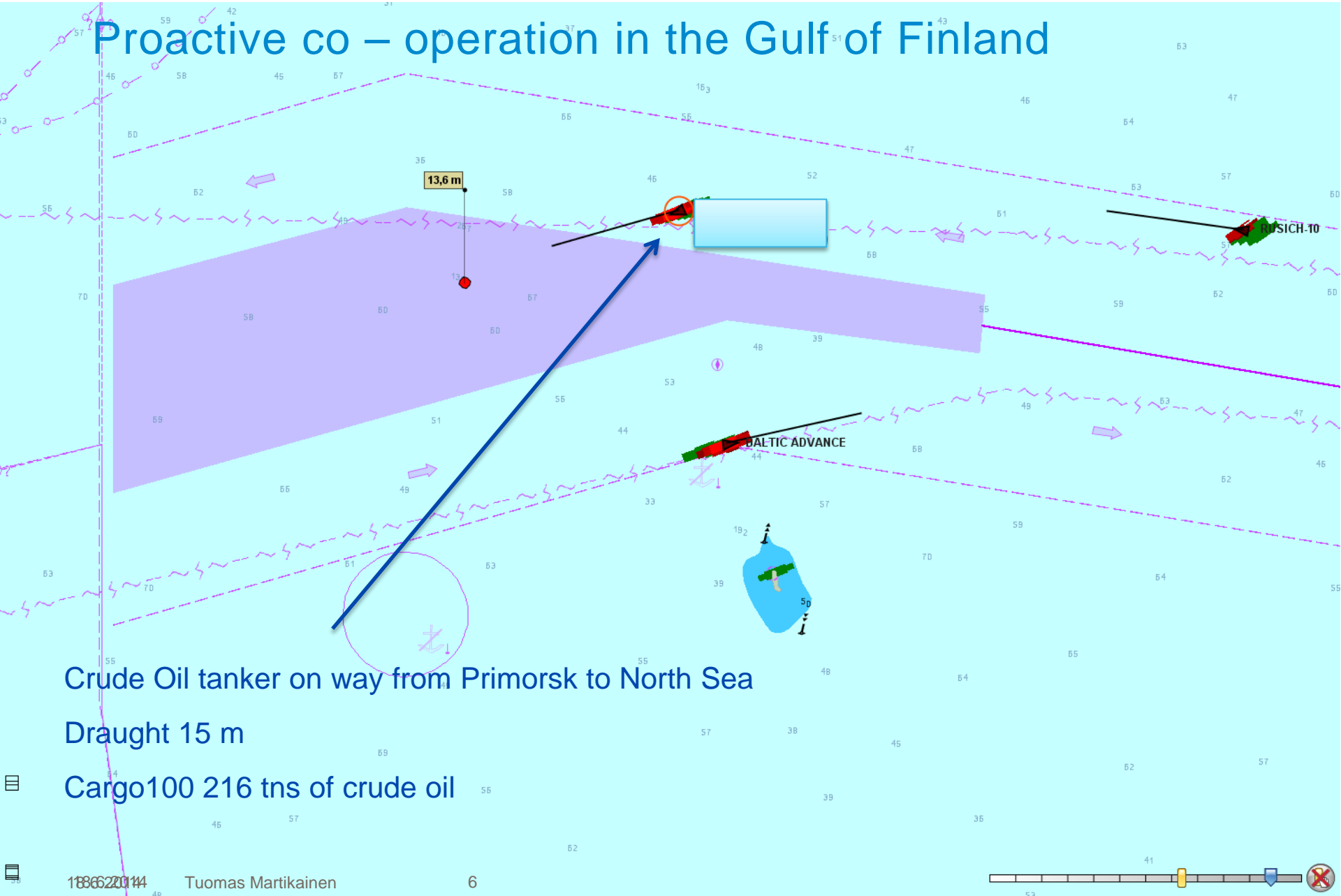
To record and, after preliminary analysis, to report relevant and available information concerning contraventions to the appropriate authorities for consideration of what warning or enforcement action should be taken.

In winter conditions, to provide information on ice waypoints for vessels sailing in the GOFREP area.

To respond to external emergencies and to assist in rescue operations taking place in the GOFREP area.



Proactive co – operation in the Gulf of Finland

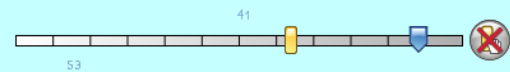
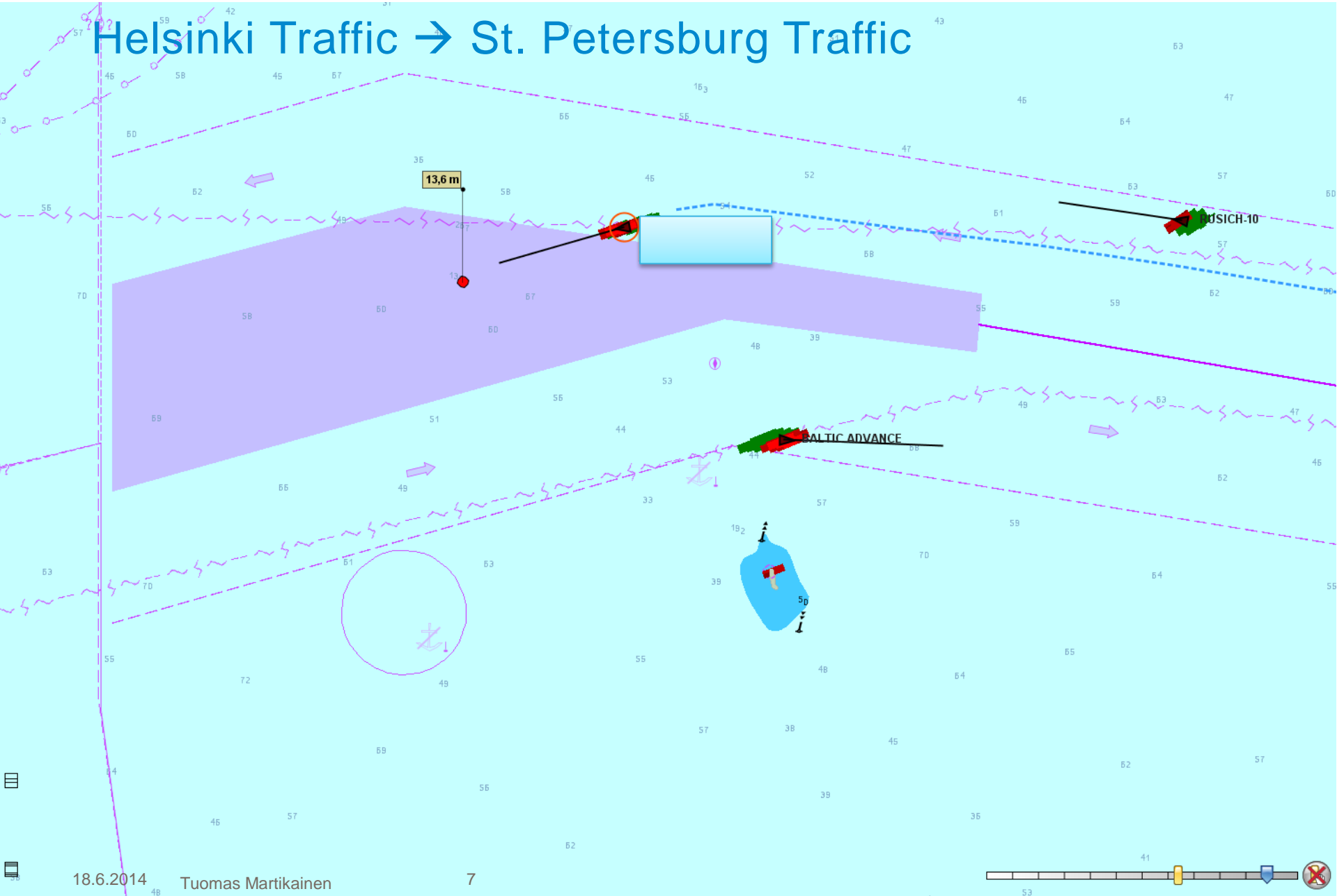


Crude Oil tanker on way from Primorsk to North Sea

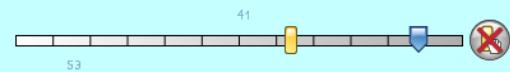
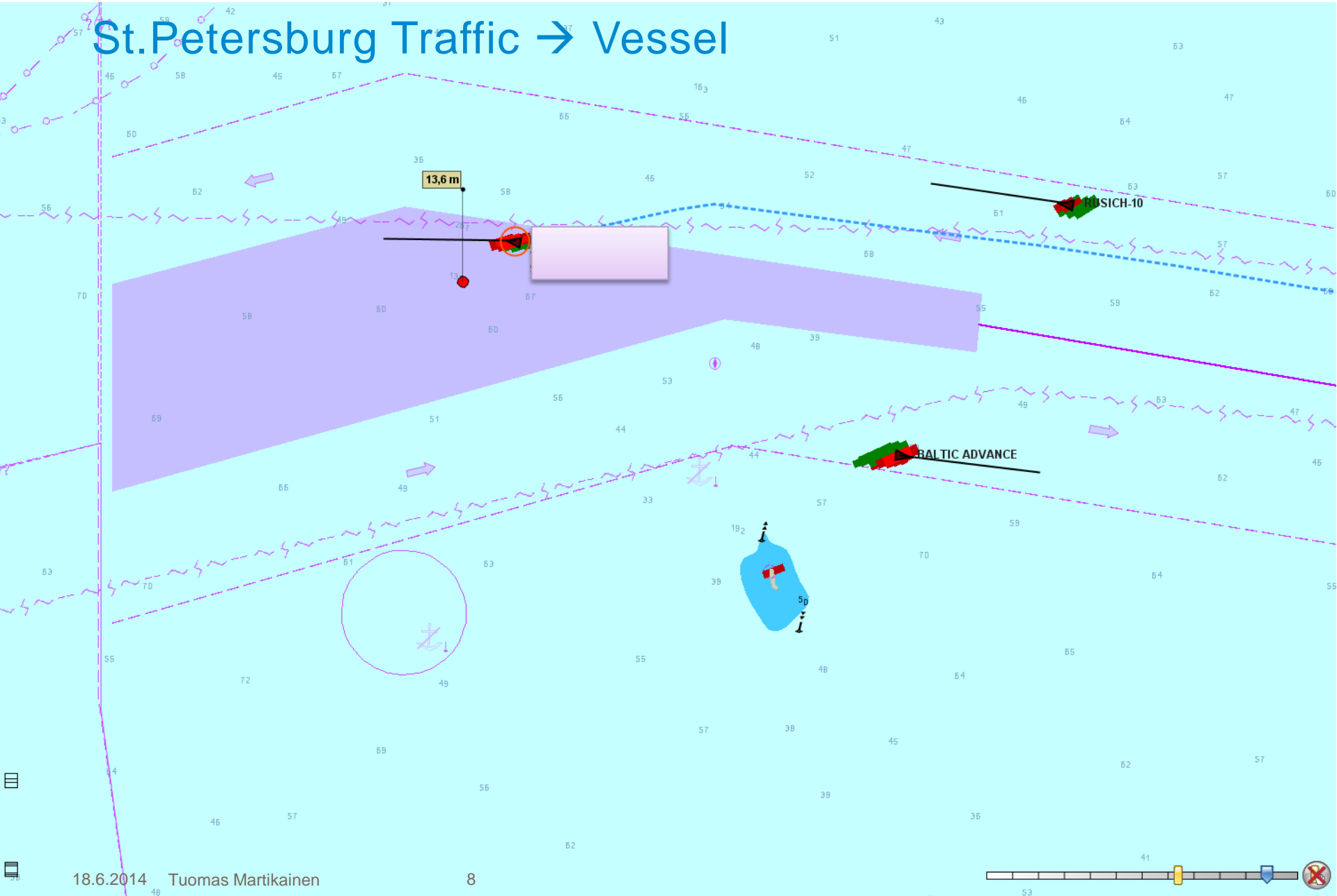
Draught 15 m

Cargo 100 216 tns of crude oil

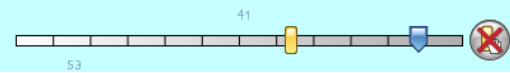
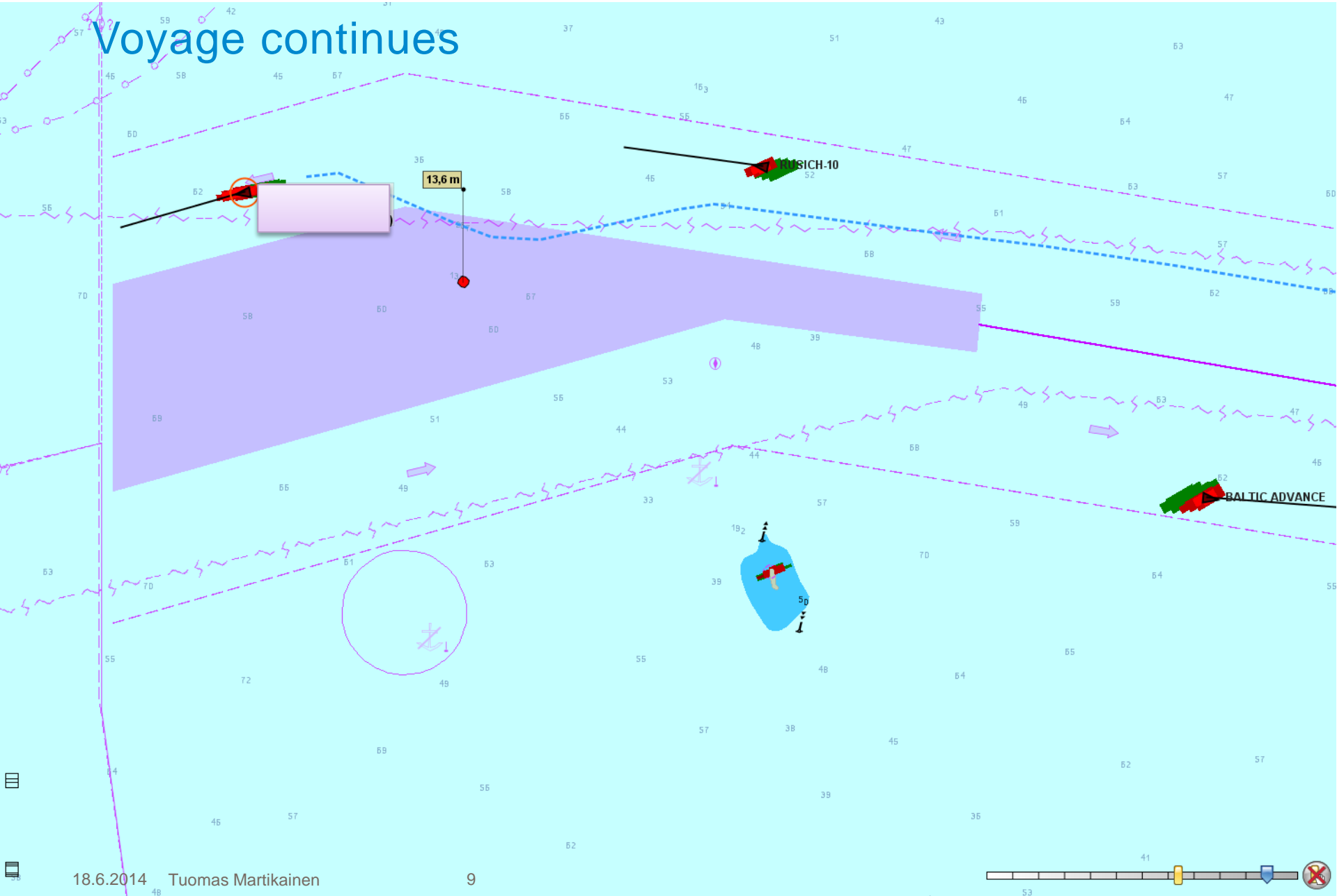
Helsinki Traffic → St. Petersburg Traffic



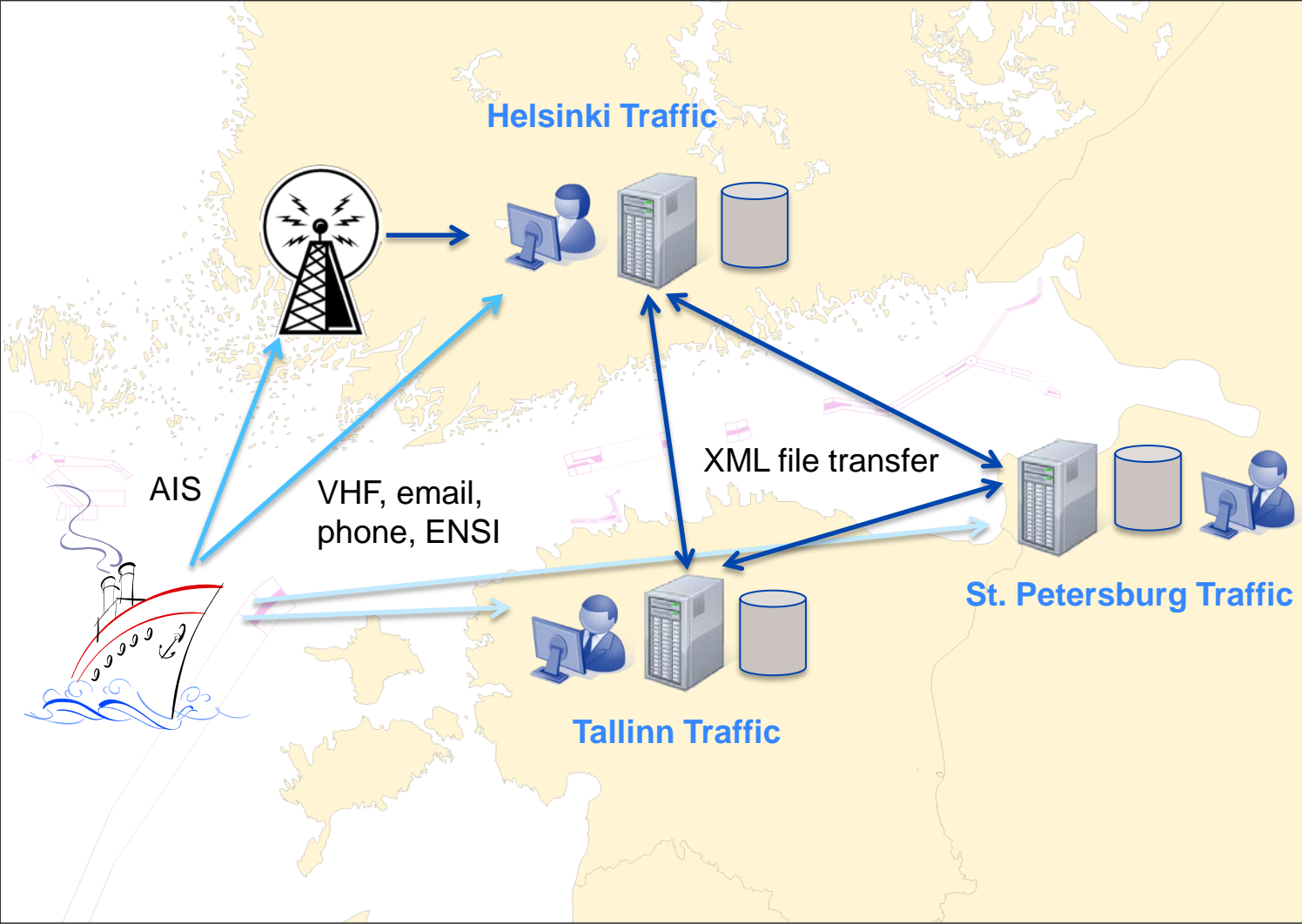
St.Petersburg Traffic → Vessel



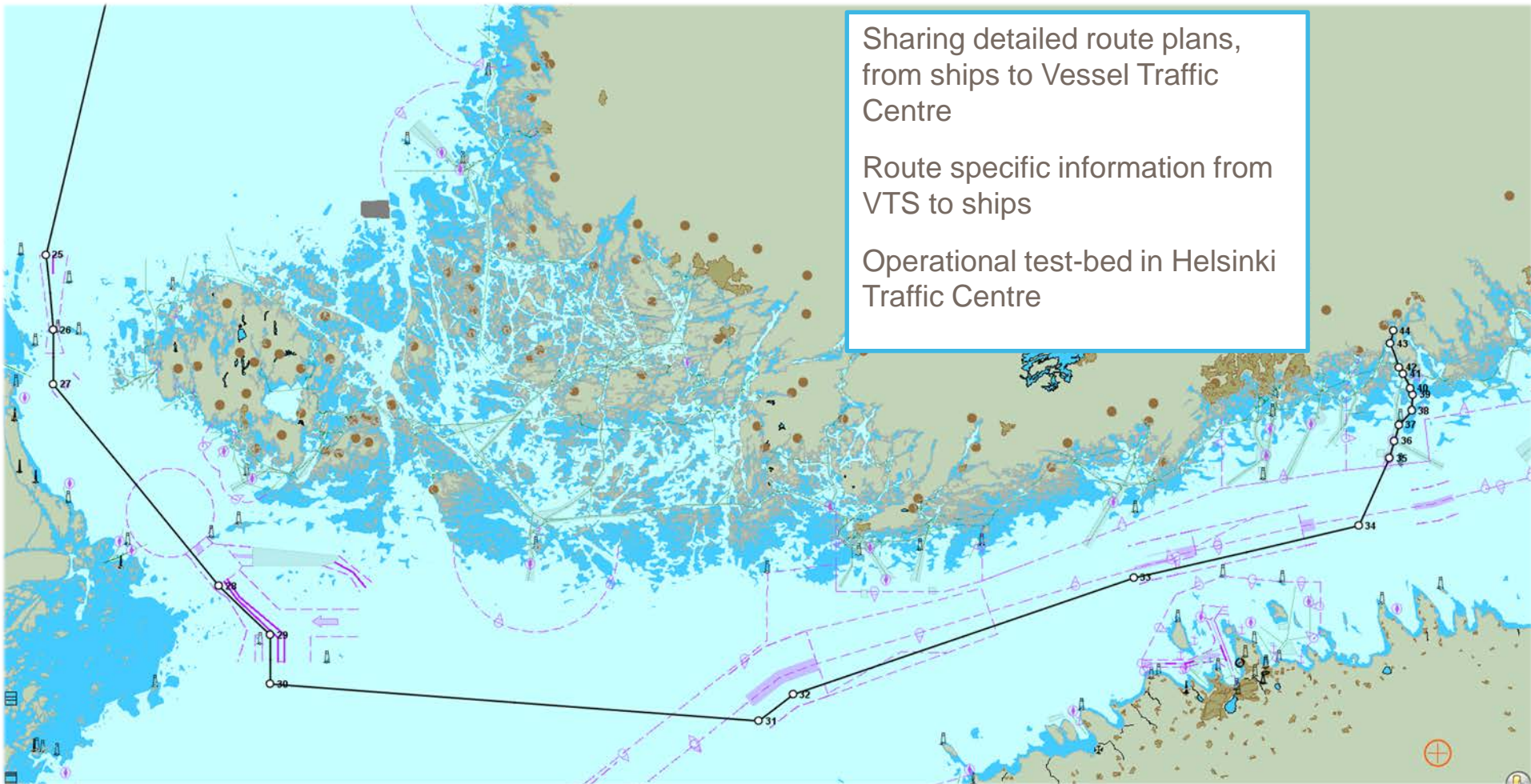
Voyage continues



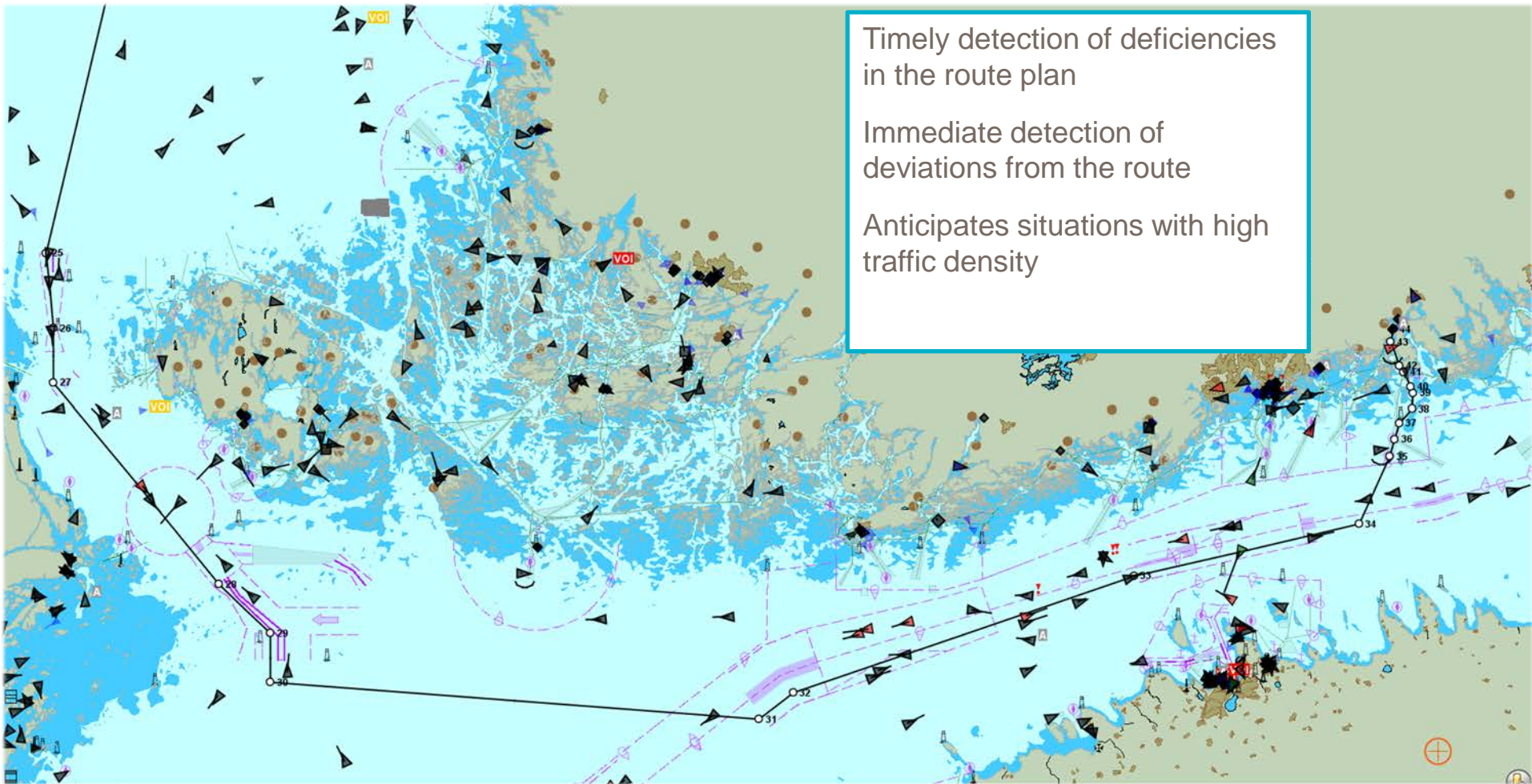
Information sharing



First steps towards e-Navigation



ENSI – Enhanced Navigation Support Information



ENSI in practise



ECDIS on board



Routeplan



VTS centre - the route is checked automatically

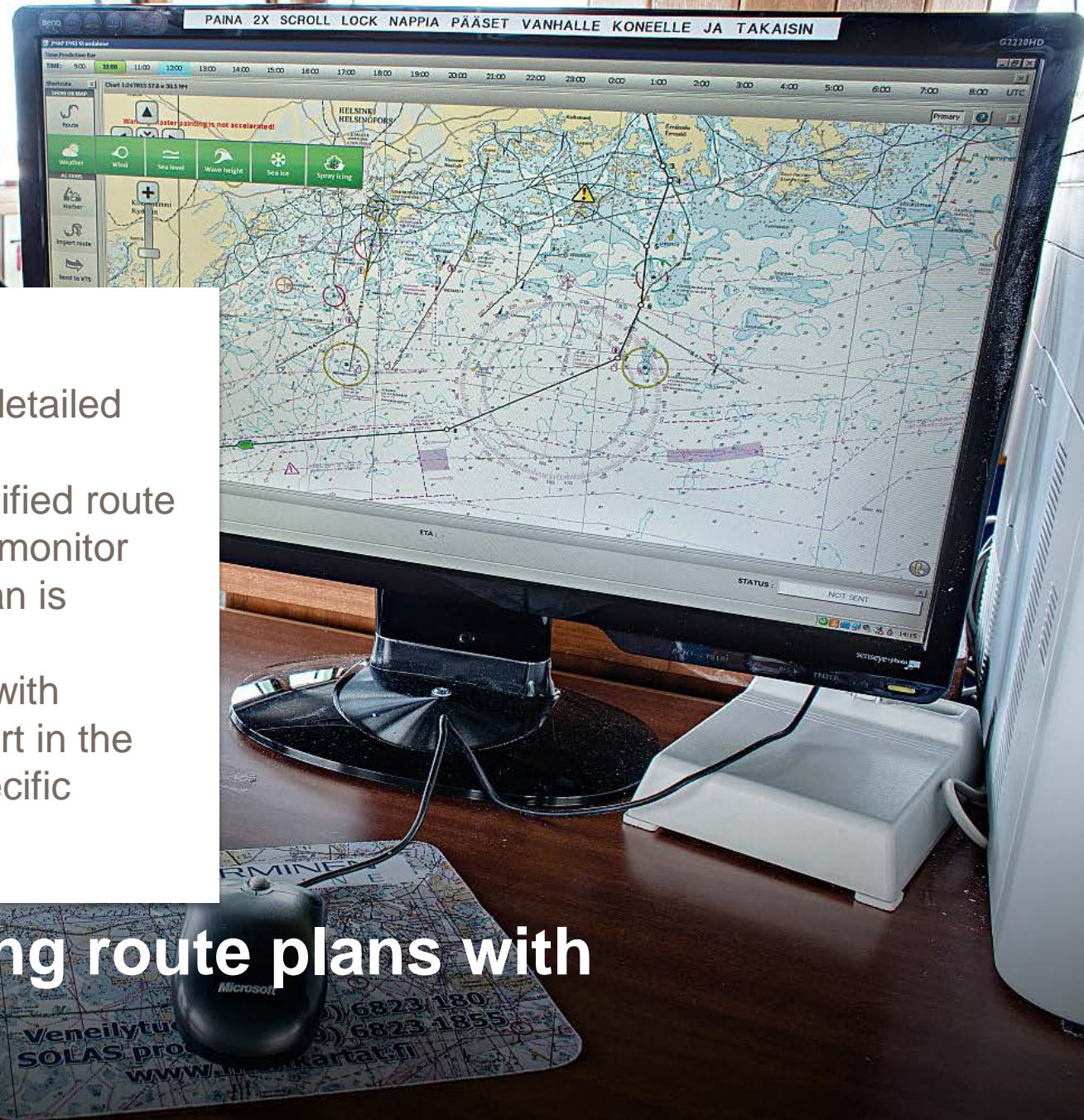


Information to vessels

VTS centres

- Have access to detailed route plans
- Warn about identified route deficiencies and monitor how the route plan is implemented
- Provide vessels with navigation support in the form of route-specific information

ENSI = sharing route plans with the VTS



The ENSI service facilitates the work of the ship's crew



- ENSI provides an outside opinion on the vessel's route plan
- ENSI provides vessels with data supporting the route plan, e.g. information about conditions, warnings and winter navigation
- Vessels can transmit the information required for the GOFREP report together with the route plan
- The ENSI service and its contents are under development; test bed for eNavigation services



Thank you